

ECO GREEN

EQUIPMENT





¿Qué tan eficiente es realmente el reciclaje de neumáticos mineros en la mejora de la durabilidad de las vías y la sostenibilidad ambiental?

ECOTRACK CONTROL

Specifications

- Trackout Control Mat • 5' x 7'
 - 7' x 14'-6"
 - 7' x 22'
 - 5' x 40' • 10' x 11'
- Single Replacement Block
 - 27"L x 4"H x 4.5"W
- Single Half Replacement Block
 - 13"L x 4"H x 4.5"W
 - Custom sizing available upon request

ECO GREEN
EQUIPMENT



ECOTRACK CONTROL

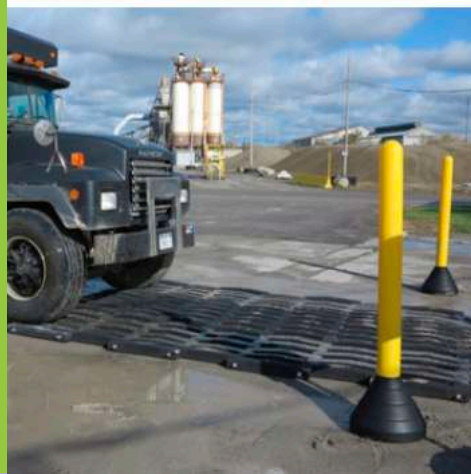
Being able to control the tracking of dirt, rock and other debris by construction vehicles when exiting project sites can be a challenge.

Municipalities are enforcing regulations to protect against damage to property and the environment. Failure to properly manage a construction exit may lead to law suits and fines. The most economical and environmentally sound solution is the RubberForm Ecotrack Control Mat.

Vehicle vibration caused by driving over the Ecotrack Control Mat removes sediment that might otherwise be tracked onto the road surface. Then RubberForm's highly durable, yet portable and reusable Ecotrack Control Mats trap the debris as the vehicle passes over.

Installation is fast and simple: no digging, laying down gravel or filtering required. At the conclusion of the project simply roll up the mats for transport to your next job site!

ECO GREEN
EQUIPMENT



Scrap Tire **NEWS**

Vol. 35 No. 4

Covering News & Developments in Tire and Rubber Recycling

April 2021



Rubberosion's recycled rubber Renegade Rumble Strip is ready for toughest, high traffic job site.

ECO GREEN
EQUIPMENT





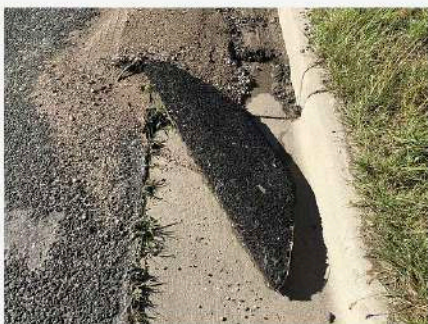
Sedi-Mat

There is finally a solution to area/sump inlet protection that doesn't involve a bag, lifting grates, or specialized equipment. The Sedi-Mat is a 24"x40"x1.5" mat that sits directly over your inlet. Installation doesn't get any easier than this. Made with a low profile, fit to be run over, the Sedi-Mat is a real option for high-traffic areas.



Curb Catcher

Rubber molded mat similar to the Sedi-Mat but made specifically for combination inlets, our patented Curb Catcher has a lip to fit into the throat of the inlet. Mat lays 41.5"x 26"x1.5" with a lip that stands 38 3/8"x3"x4". The Curb catcher fits snugly into the throat of the inlet and flush over the grate to ensure effectiveness and proper compliance.



Rubber Check Dams

Molded to fit perfectly into a curb line, the Rubber Check Dam has 22" of curb surface contact. Highly durable, the rubber check dam is perfect for high-traffic areas and high sediment areas. These check dams are made with recycled rubber and can withstand constant assault of busy job sites.



Vertical Panels



Messages and Legends

A wide variety of messages and legends can be printed on one or two sides of the TrafFix Vertical Panels. Engineer, High Performance or Diamond Grade reflective sheeting is available for all of our Vertical Panels. TrafFix Vertical Panels are ideal for parking lots, schools, churches, or in-plant applications.



Vertical Panel Rubber Base

Made from 100% recycled rubber, the base incorporates two easy-grip carrying handles, a vulcanized rubber center section that provides reinforcement from wear and tear due to panel separation. On the under side of the base, there are four raised anti-rotational foot pads to minimize movement from wind, or turbulence from passing vehicles.

[Overview](#)[40000 Series](#)[33000/34000 Series](#)[Images](#)[Documents](#)



Eco Krumbuster

- Rubber Powder
- Total 1 ton per hour of 30 mesh or .6 mm

ECO GREEN
EQUIPMENT





Jose Carreño,
Lider de Laboratorios
. Colombiana de Bitumen S.A.S

Let's build a greener future for mining industry

www.ecogreenequipment.com

ECO GREEN
EQUIPMENT

ECO GREEN

EQUIPMENT

www.ecogreenequipment.com